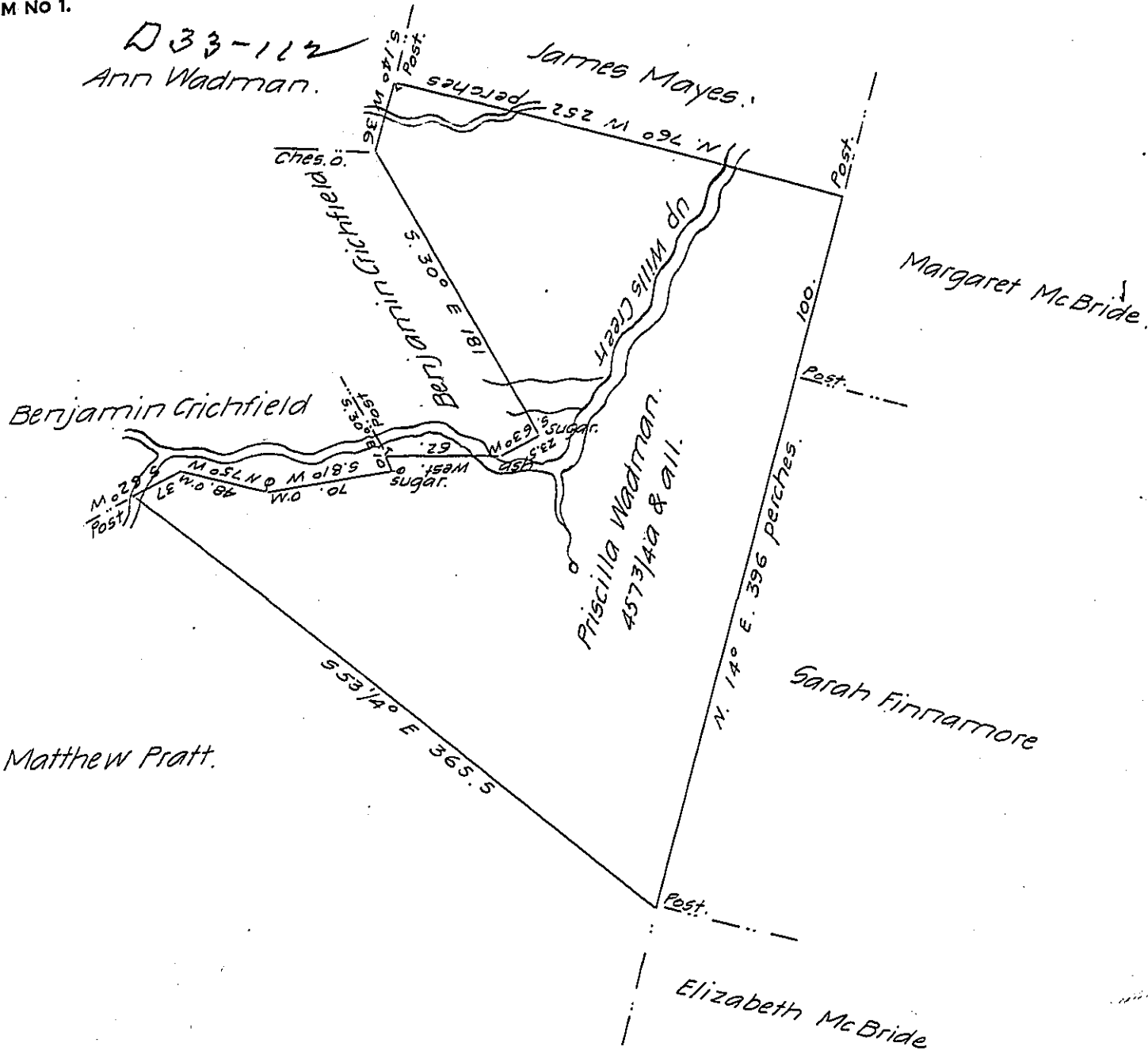


FORM NO 1.

D33-112
Ann Wadman.



Situate on Wills Creek adjoining Benjamin Crichfields Improve-
 ment in Londonderry Township Bedford County and surveyed the
 1st day of September 1794. In pursuance of a Warrant dated the 19th
 day of July 1793.

~~By John Wells (son of Richard)~~

Approved by George Woods Junr D.S

To Daniel Brodhead Esquire

Surveyor General

IN TESTIMONY that the above is a copy of the original remaining on file in
 the Department of Internal Affairs of Pennsylvania, made
 conformably to an Act of Assembly approved the 16th day of
 February, 1833, I have hereunto set my Hand and caused
 the Seal of said Department to be affixed at Harrisburg,
 this twenty third day of May 1907

Henry Hoover
 Secretary of Internal Affairs.